

Beyond Mixing Light — We Control Vision

Diffusion Control

An invention of human-centered color lighting
based on perceptual science

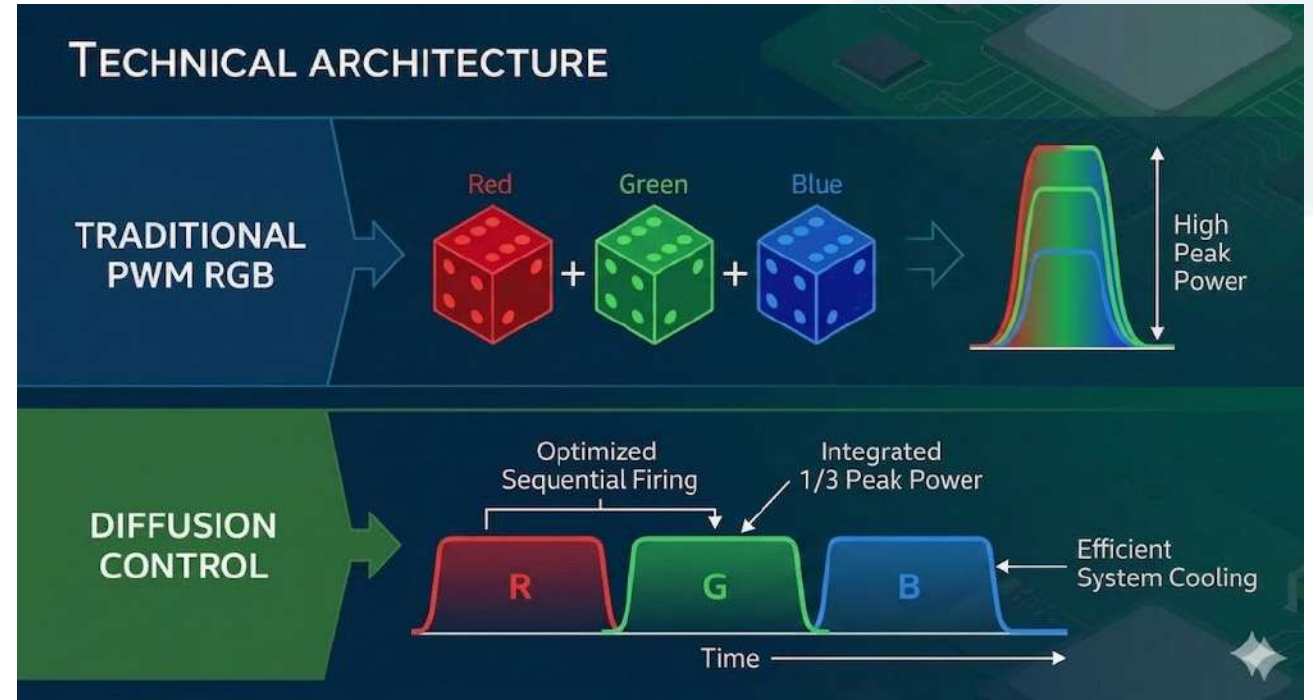
Under Technology 2026

Fixed Energy, Flawless Color

Cutting Peak Current to 1/3

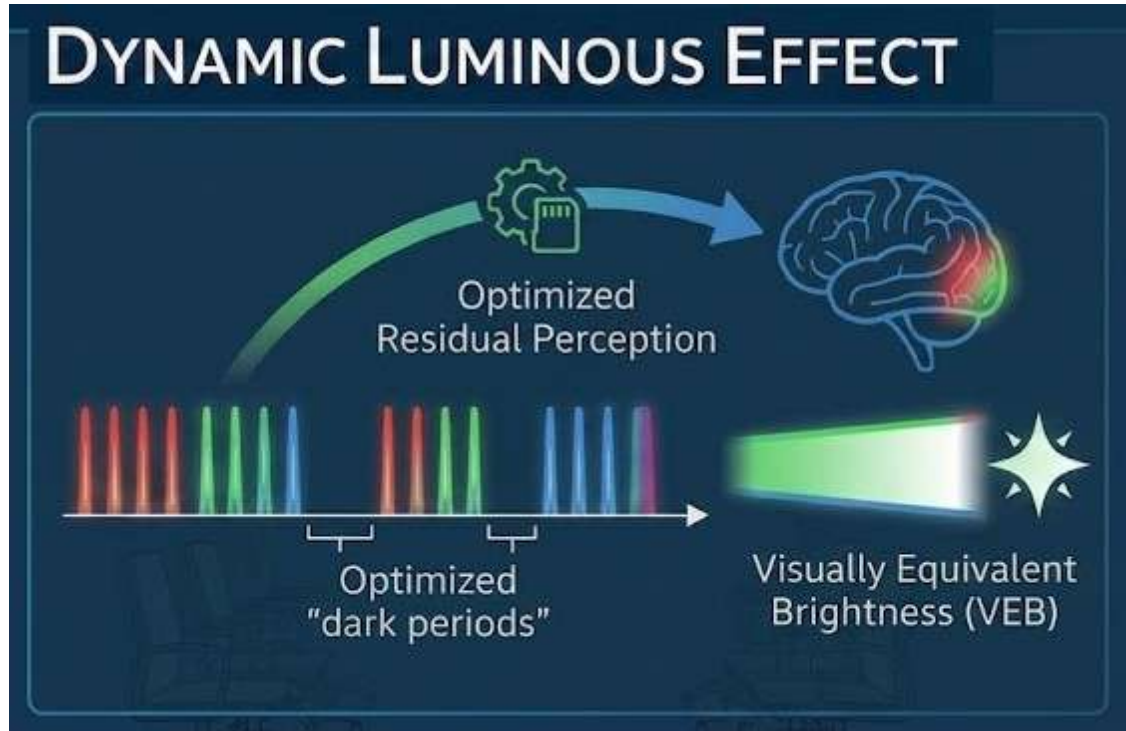
Diffusion Control (DC) allows for full-color dimming while emitting light in a **single color** at regular intervals. As a result, power consumption can be significantly reduced.

* **Miniaturized Hardware:** Drastically downsizes PSUs and cooling systems, reducing initial hardware costs and extending lifespan.



*Constant switching interval mitigates **transient response** instability,
ensuring color reproduction even at higher current levels*

Persistence of Vision Management



Suppress noise and dim the light

Lowering Value activates "**optimized dark periods**". This reduces flicker and lowers power consumption while maintaining brightness through dynamic luminous effects.

* **Visual Alchemy:** By maintaining brightness and inserting black, the color changes from cyan to turquoise as a texture.

*"This control reduces power consumption **by half** while preserving perceived brightness."*

Digital Control of Human Cones



Hue-Invariant Control

DC creates perfect white only through timing adjustments, which allows for Saturation adjustments without altering Hue.



Brightness adjustment

Value saves energy and adjusts brightness by inserting optimized dark periods in the final stage.



New color definition

“Absolute Hue definition” and **“Precise Saturation control”** create a new standard for color.

*“Achieve accurate color reproduction by breaking down colors, saturating human perception, and commanding the **dimension of time.**”*

Circadian Office Wellness

Natural Biological Rhythms

Automatically transitions from cool morning light to warm evening tones to support employee health and focus.

* **Standalone Operation:** Complete self-contained system requiring no complex external wiring. All you need to do is connect the power supply after installation.



*“Seamlessly shifts to designated environments **every hour**
to maintain optimal workplace energy. “*

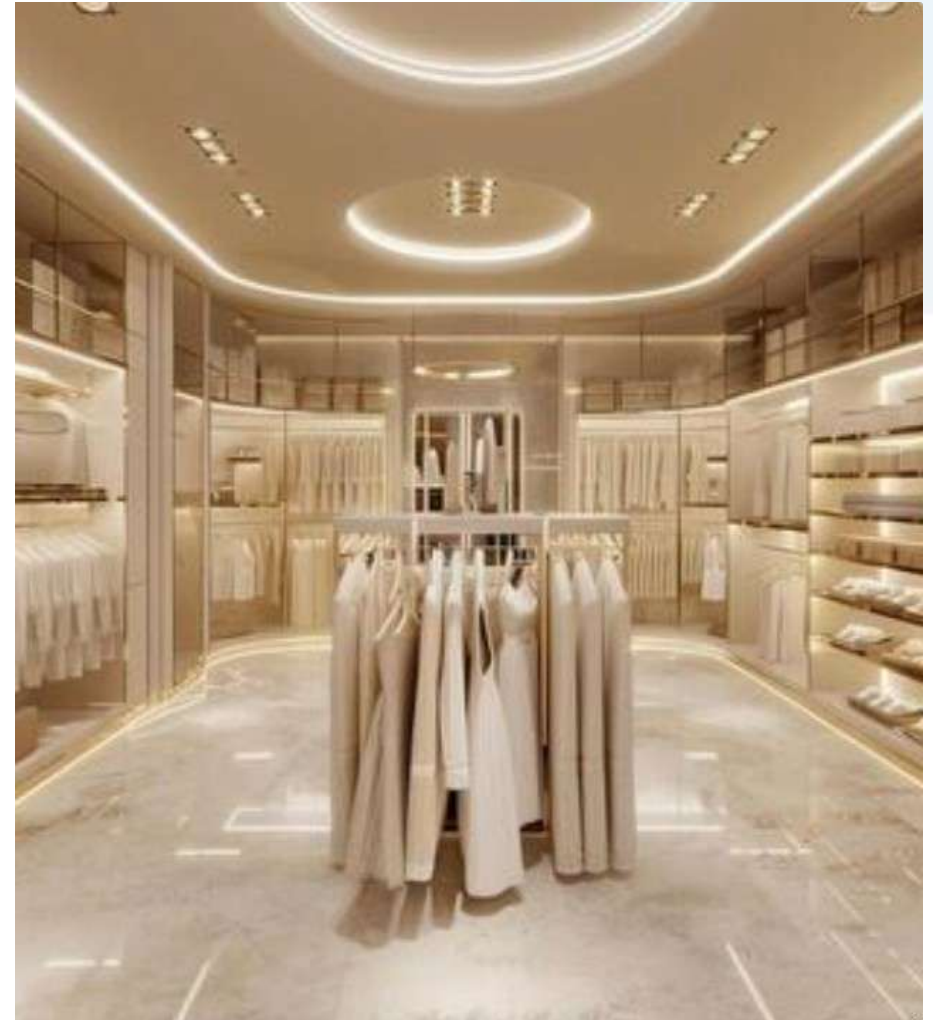
Don't just light the skin

Simulate the world it lives in.

Instantly switch between natural daylight, office environments, and evening social settings.

* **Enhanced Experience:** Customers can experience how products perform in real-world environments, powered by **skin-optimized** lighting.

*“Switch lighting environments **discreetly** using your smartphone or tablet.”*



Bringing fresh food to life



- * **Produce:** Enhances rich greens to maximize the vividness of fresh leaves and highlight the organic quality of produce.
- * **Meat:** Intensifies deep reds and clear whites to highlight the premium, juicy quality of fresh meats.
- * **Fish:** Optimizes white-balancing to capture the vivid yellow accents and pristine wet luster of day-one freshness.

*“By switching the light color of the **same unit**,
it can be used in all sales areas.”*

Safeguarding Treasures



Balancing the viewing quality

- * **Minimal Thermal Stress:** By always limiting the illumination to a single color, it extends the lifespan of the exhibited items.
- * **Low-Lux Clarity:** It achieves brightness and vivid colors even under light levels that meet strict preservation standards.

*"Triggered by **human presence**, the system instantly transitions from 'Protective Mode' to 'Optimal Viewing Mode'."*

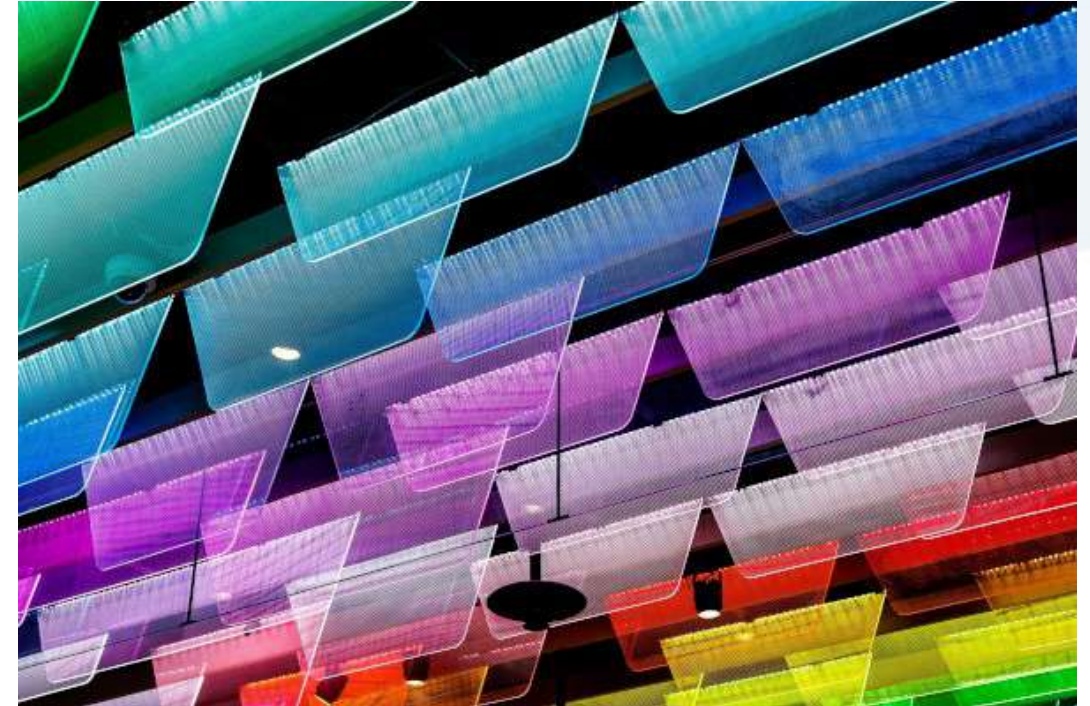
Pure Creative Freedom

Manipulating light is even more fun

They can create fun sequences in text to synchronize with other units and save them instantly to the DC chip.

* **MOTOR:** No matter what color it is, it will slowly transition to another color.

* **FADE:** It goes out slowly, making you a little worried, and then slowly lights up in a new color.



*“We believe that true audience excitement only begins when the creator genuinely **enjoys the craft.**”*

What color do you want?



Extend Ostwald format

Using the Ostwald format from the Remote app is convenient.

It consists of a hue number and two letters of the alphabet.



Full range of colors

Of course, you can also set all the colors provided by the DC chip for each unit from the Remote app.

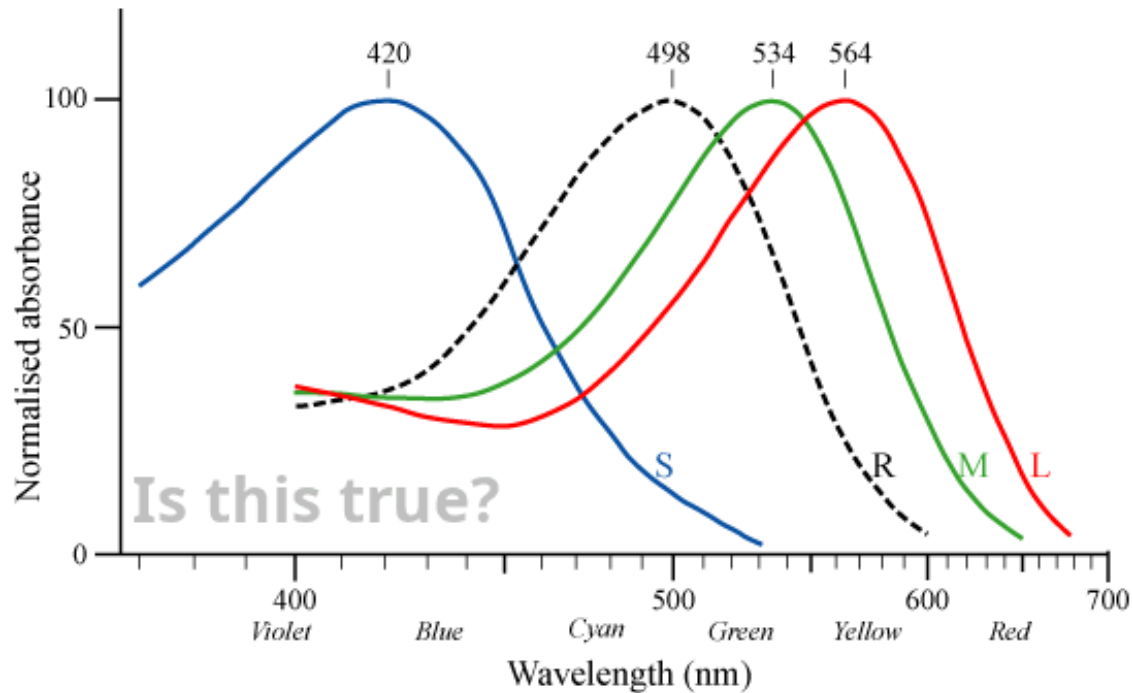


Aesthetic measure

The Remote app calculates evaluations based on color harmony theory. Please use as a reference.

*"The defined color wheel is precisely divided into 24 sections, optimized around wavelength and **virtual L-cone** characteristics."*

Bypassing Analog Limitations



Inclusive Visual Perception

Temporally separated stimuli drive each cone to its saturation point, enabling precise and vivid color synthesis in the brain.

* **Barrier-Free:** Driven by the desire for individuals with color vision diversity to experience and enjoy hues in their true, vibrant beauty. Let's opening new doors to sharing the rich world of color.

*Because dimming is specifically designed for human visual perception, video cameras **cannot capture** images correctly.*

Dynamic & Decoupled Architecture



Robust standalone

Operates reliably on its own
internal programming,
requiring zero external connection.



Local Daisy-Chain

The reasons for connecting are
for synchronous operation and to
receive commands from the
controller.



On-Demand Management

The controller is required only for
live remote control, re-sequencing,
or communication data analysis.

*"The dimming chip features a diverse range of **built-in effects***

- we invite you to explore the possibilities."

Built-in Total Power Measurement

100
Data Transparency
%

Verifiable Energy Savings

Each DC chip outputs a power code whenever a certain amount of power is consumed, and the controller aggregates data from all connected chips.

Regardless of complex dimming sequences, providing verifiable proof for **ESG Reporting** and Carbon Footprint analysis.

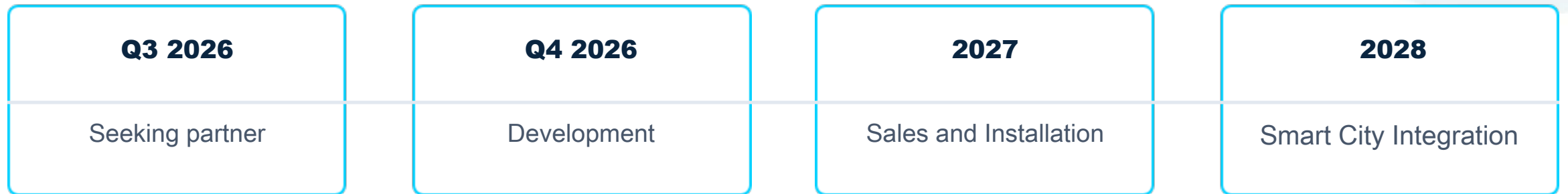
* **Power Code:** A versatile script-ready protocol for both power data and external control.

*This DC chip incorporates **touch sensing & temperature measurement**,
and can be controlled by sequence.*

Competitive Advantage

Feature	Standard PWM	Diffusion Control (DC)
Peak Current Load	High (300%)	Ultra-Low (100%)
Power Consumption	Standard	Value can be reduced
Color Fidelity	Frequent Hue Drift	Hue-Invariant
White Balance	Fine Tuning	10% margin of error
Large Scale Lighting	Unstable colors	Stable color

The Path Forward



Redefine the value of light, together.



Let's redefine the value of light, together.

Q&A

Thank you for your time and attention.